



2018 Open Dutch Championship Dragon Class

6 – 9 September 2018

Medemblik, the Netherlands

SAILING INSTRUCTIONS

The Organizing Authority is the RYC Hollandia in conjunction with the Dutch Dragon Association, under the auspices of the Royal Netherlands Yachting Union (RNYU)

The notation '[NP]' in a rule in the SI means that a breach of that rule will not be grounds for protest by a boat,

The notation '[SP]' in a rule of the SI means that a standard penalty for a breach of that rule may be applied by the race committee without a hearing.

1 RULES

1.1 The regatta will be governed by the rules as defined in *The Racing Rules of Sailing (RRS)*.

1.2 The prescriptions of the RNYU will apply. (see http://www.sailing.org/documents/racingrules/national_prescriptions.php)

1.3 The “*Rules of Championships Sailing, Windsurfing and Kiteboarding*” will apply.

1.4 RRS 44 has been changed according to SI 14.

1.5 Under RRS 87, the crew weight restriction in rule 13.30 of the International Dragon Class Rules will not apply.

1.6 Under RRS 87, in addition to rule 11.11 of the International Dragon Class Rules, the race committee may communicate relevant information to competitors via VHF, channel 72. However, the Racing Rules signals will prevail.

1.7 If there is a conflict between languages the English text will take precedence.

1.8 RRS Appendix T applies.

1.9 Every person on board who has his domicile in the Netherlands shall have the appropriate license.

2 NOTICES TO COMPETITORS

Notices to competitors will be posted on the official notice board(s) located near the entrance of the race office.

3 CHANGES TO SAILING INSTRUCTIONS

Any change to the sailing instructions will be posted before 0900 on the day it will take effect, except that any change to the schedule of races will be posted by 2000 on the day before it will take effect.

4 SIGNALS MADE ASHORE

4.1 Signals made ashore will be displayed at the flag pole near the race office.

4.2 When flag AP is displayed ashore, '1 minute' is replaced with 'not less than 60 minutes' in the race signal AP.

5 FORMAT AND SCHEDULE OF RACES AND EVENTS

5.1 Registration

Wednesday September 5	1900 – 2100	Registration
Thursday September 6	0830 – 1200	Registration

5.2 Sailing

Thursday September 6	1155	Warning signal race 1
	a.s.a.p.	Warning signal race 2
Friday September 7	1055	Warning signal race 3
	a.s.a.p.	Warning signal race 4
Saturday September 8	1055	Warning signal race 5
	a.s.a.p.	Warning signal race 6
Sunday September 9	1055 hrs	Warning signal race 7

a.s.a.p. = races will start as soon as practicable at the discretion of the Race Committee.

5.3 Socials and prize giving

Thursday September 6	1800	A pasta party & drinks will be offered to competitors and volunteers by Yanmar Marine International BV . Location: MED Tratoria , Regatta Center, Medemblik Dress code: Sport or smart casual. No sailing gear.
Saturday September 8	1830	Dinner at "Wapen van Medemblik"
Sunday September 9	t.b.a.	Prize giving

t.b.a. = to be announced, as soon as possible after protest time limit

5.4 Seven races are scheduled. One extra race per day may be sailed, provided that no race becomes ahead of schedule and the change is made according to SI 3.

5.5 To alert boats that a race or sequence of races will begin soon, the orange starting line flag on the race committee signal vessel will be displayed with one sound at least five minutes before a warning signal is made.

5.6 On the last day of the regatta no warning signal will be made after 1500.

6 CLASS FLAG

The Class flag will be: Code Flag 'D'.

7 RACING AREA

Attachment A shows the approximate location of racing area.

8 THE COURSE

8.1 The diagram in Attachment B shows the course, including the approximate angles between legs, the order in which marks are to be passed and the side on which each mark is to be left.

8.2 The approximate distance from the midpoint of the starting line to mark 1 will be 1.4 – 2.4 Nm. Mark 2 will be laid at a distance of approximately 180 meters and at an angle of approximately 70 degrees to the wind from mark 1.

8.3 No later than the warning signal, the race committee signal vessel will display the approximate compass bearing of the first leg.

8.4 The course will not be shortened before the second windward leg to mark 1 has been completed. This changes RRS 32.1.

9 MARKS

9.1 Marks are described in Attachment B.

9.2 A race committee boat signalling a change of a leg of the course is a mark as provided in instruction 12.2.

10 SPARE

11 THE START

11.1 Races will be started by using RRS 26 with the warning signal made five (5) minutes before the starting signal.

11.2 The starting line will be between staffs displaying orange flags on the starting marks.

11.3 A boat that does not start within ten (10) minutes after her starting signal will be scored 'Did Not Start' without a hearing. This changes RRS A4 and A5.

12 CHANGE OF THE NEXT LEG OF THE COURSE

12.1 To change the next leg of the course, the race committee will move the original mark (or the finishing line) to a new position.

12.2 Except at a gate, boats shall pass between the race committee vessel signalling the change of the next leg and the nearby mark, leaving the mark to port and the race committee vessel to starboard. This changes RRS 28.

13 THE FINISH

The finishing line will be between staffs displaying orange flags on the finishing marks.

14 PENALTY SYSTEM

Rule 44.1 is changed so that the Two-Turns Penalty is replaced by the One-Turn Penalty.

15 TIME LIMITS AND TARGET TIMES

15.1 The time limit for the first boat in a race to finish is two hours and 30 minutes.

15.2 Boats failing to finish within 30 minutes after the first boat sails the course and finishes will be scored 'DNF' without a hearing. This changes RRS 35, A4 and A5.

15.3 If no boat has passed mark 1 within 45 minutes after her starting signal, the race will be abandoned and re-sailed as soon as possible, at the discretion of the race committee.

15.4 The target time is 90 minutes. Failure to meet the target time will not be grounds for redress. This changes RRS 62.1(a).

16 PROTESTS AND REQUESTS FOR REDRESS

16.1 Protest forms are available at the race office, located at the Regatta Center Medemblik. Protests and requests for redress or reopening shall be delivered there within the appropriate time limit.

16.2 The protest time limit is 90 minutes after the last boat has finished the last race of the day or after instruction 15.3 has been applied to that race or the race committee signals no more racing today, whichever is later.

16.3 Notices will be posted no later than 30 minutes after the protest time limit to inform competitors of hearings in which they are parties or named as witnesses. Hearings will be held in the protest room, located at the race office, beginning at the time posted.

16.4 Notices of protests by the race committee, technical committee or protest committee will be posted to inform boats under RRS 61.1(b).

16.5 On the last scheduled day of racing a request for redress from a protest committee decision shall be delivered no later than 30 minutes after the decision was posted. This changes RRS 62.2.

17 SCORING

17.1 Four races are required to be completed to constitute a series.

17.2 (a) When fewer than five races have been completed, a boat's series score will be the total of her race scores.

(b) When from five to seven races have been completed, a boat's series score will be the total of her race scores excluding her worst score.

18 SAFETY REGULATIONS [NP] [DP]

18.1 Each racing day, before the warning signal of the first race of that day, each boat shall pass on the starboard side of the race committee signal vessel and have her sail number orally acknowledged by the race committee.

18.2 A boat that retires from a race shall notify the race committee as soon as possible before leaving the race area, and shall notify the race office at once on coming ashore.

18.3 Boats not leaving the harbour for a day's race shall inform the race office prior to the first warning signal of that day.

18.4 If any one of the race signals 'AP over A', 'AP over H', 'N over A' or 'N over H' is made on a race committee vessel, all boats shall return to the harbour immediately.

18.5 While afloat it is strongly recommended to wear adequate personal buoyancy under all circumstances.

19 REPLACEMENT OF CREW OR EQUIPMENT

19.1 Substitution of competitors will not be allowed without prior written approval of the race committee. Replacement of the responsible person is not allowed.

19.2 Substitution of damaged or lost equipment will not be allowed unless authorized by the race committee. Requests for substitution shall be made in writing to the committee at the first reasonable opportunity.

20 EQUIPMENT AND MEASUREMENTS CHECKS

20.1 A boat or equipment may be inspected at any time for compliance with the class rules and sailing instructions.

20.2 On the water, a boat can be instructed by an equipment inspector or measurer for the event to proceed immediately to a designated area for inspection.

20.3 Ashore, equipment may be inspected or measured at times specified in the class rules.

21 SPARE

22 OFFICIAL BOATS

Official boats will be marked as follows:

- a. The race committee signal vessel will fly a white flag with 'RC'
- b. Orange rigid inflatable boats of the race committee are marked 'rescue' on both sides of the hull and will carry a grey outboard cover with the club insignia.

23 SUPPORT BOATS [NP] [DP]

23.1 Team leaders, coaches and other support staff (or "support") are allowed to be present in the racing area, but will remain under the responsibility of the supported racing boat.

23.2 Except in case of emergency, team leaders, coaches and other support persons shall stay outside areas where boats are racing from the time of the preparatory signal until all boats have finished or retired or the race committee signals a postponement, general recall or abandonment.

23.3 Support boats shall be marked with a conspicuously displayed flag of the country they present, with a minimum height of 200 mm.

23.4 Support boats should be prepared to offer assistance to competing boats in the event of adverse weather if requested to do so by the race committee.

24 TRASH DISPOSAL [NP] [DP]

Trash may be placed aboard support or race committee vessels

25 HAUL-OUT RESTRICTIONS [NP] [DP]

Boats shall not be hauled out during the regatta except with and according to the terms of prior written permission of the race committee.

26 DIVING EQUIPMENT AND PLASTIC POOLS [NP] [DP]

Underwater breathing apparatus and plastic pools or their equivalent shall not be used around keelboats between the preparatory signal of the first race and the end of the regatta.

27 RADIO COMMUNICATION [DP]

27.1 Except in an emergency, a boat that is racing shall not make voice or data transmissions and shall not receive voice or data communications that is not available to all boats.

27.2 A VHF-radio maybe used only in an emergency. The race committee may communicate relevant information to sailors on Channel 72. The Racing Rules Signals will prevail.

28 PRIZES

28.1 Prizes will be awarded to each member of the crew of the first, second and third placed boat in the championship.

28.2 Helmsman and crew of the winning boat of the championship acquire the title 'Dutch Champion' and will receive the accompanying medal of the RNYU. The responsible person of the winning boat acquires the Blue Pennant of the RNYU. In addition to the above the responsible person of the winning boat shall have the possession of the Silver Dragon Temporary Prize for one year.

28.3 The Theodoor Gilissen Trophée will be awarded to the first placed boat, without discard, on Saturday evening. The responsible person of the winning boat shall have the possession of this prize for one year.

29 DISCLAIMER OF LIABILITY

Competitors participate in het regatta entirely at their own risk. See RRS 4, Decision to Race. The organizing authority will not accept any liability for

material damage or personal injury or death sustained in conjunction with or prior to, during or after the regatta.

30 RIGHTS TO USE NAMES AND LIKENESS

By participating in this event, competitors automatically grant to the organizing authority and the event sponsor the right, in perpetuity, to make, use and show, at their discretion, any photography, audio and video recordings, and other reproductions of them made at the venue or on the water from the time of their arrival at the venue, until their final departure, without compensation.

31 INSURANCE

Each participating boat shall be insured with a valid third-party liability insurance with a minimum cover of Euro 1.500.000 per incident or the equivalent.

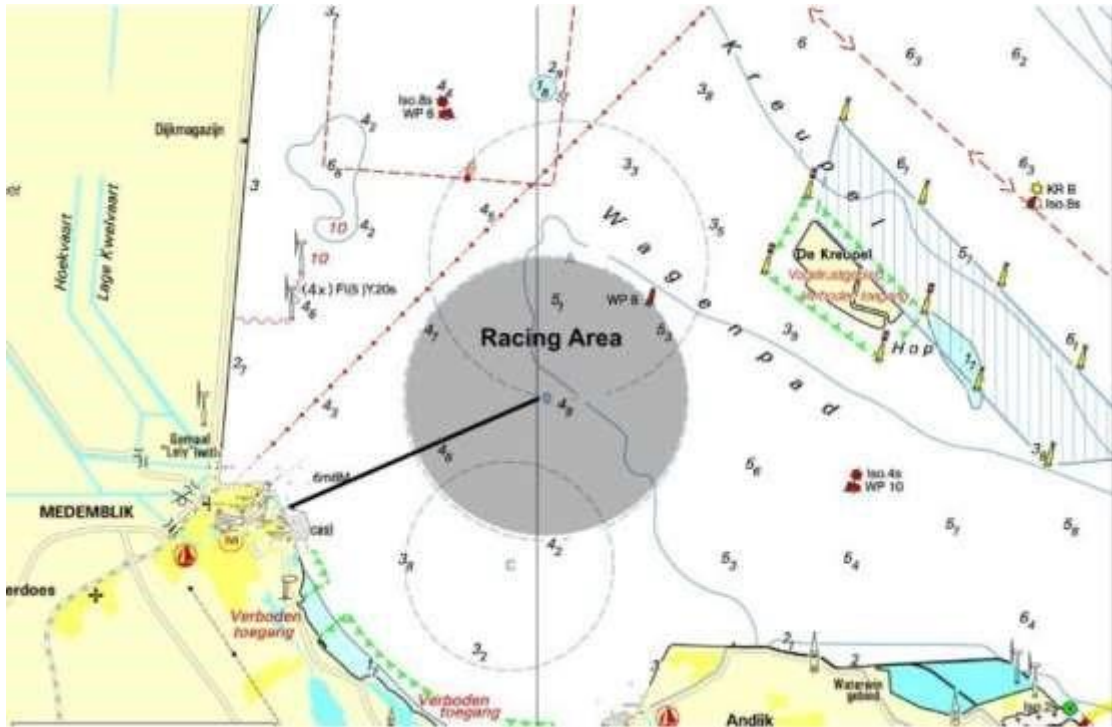
32 ORGANISATION

The race officer is: John Borsboom

The chairman of the protest committee is: Margriet Pannevis

APPROXIMATE POSITION RACING AREA

Harbour (Regatta Center) – Racing Area (midpoint) distance: approx. 2,2 NM
compass bearing: approximately: 060.



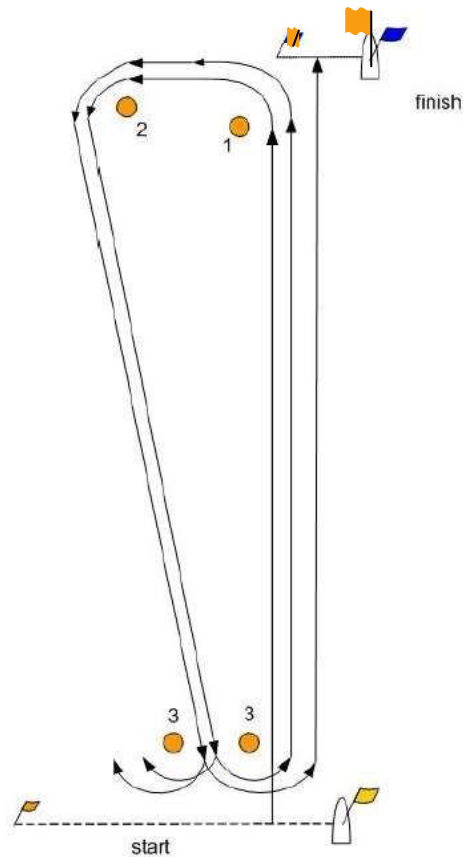
MARKS:

- Port-end starting mark: a dan buoy with an orange flag
- Starboard-end starting mark: the RC Signal vessel displaying an orange flag
- Marks 1 & 2 orange inflatable cubical shapes
- Gate marks 3p/3s: orange inflatable cubical shapes

- Port-end finishing mark: a dan buoy with an orange flag
- Starboard-end finishing mark: a RC vessel displaying an orange and blue flag

Please note: Marks are not physically numbered

Course Diagram



Start-1-2-3(gate)-1-2-3(gate)-finish