



## SAILING INSTRUCTIONS Open Dutch Championship Dragon Class

### Organized by the Royal Netherlands Yacht Club (RNYC) in cooperation with the Dutch Dragon Association

and under the auspices of the Royal Netherlands Watersport Association (RNWA)  
from September 12 to September 15, 2019  
Location: IJsselmeer north off Muiden, the Netherlands

---

#### 1. RULES

- 1.1 The regatta will be governed by the rules as defined in *The Racing Rules of Sailing (RRS)*.
- 1.2 The 'Rules for Championships Sailing, Windsurfing and Kiteboarding' will apply.
- 1.3 RRS 32.1 has been changed according to SI 8.4.  
  
RRS A4 and A5 have been changed according to SI 11.3.  
  
RRS 28.1 has been changed according to SI 12.2.  
  
RRS 44.1 has been changes according to SI 14.  
  
RRS 35, A4 and A5 have been changed according to SI 15.2.  
  
RRS 62.1(a) has been changed according to SI 15.1.  
  
RRS 60.1(a), 61.1(b), 62.2 and 65.2 have been changed according to SI 16.
- 1.4 Under RRS 87, the crew weight restriction in rule 13.30 of the International Dragon Class Rules will not apply.
- 1.5 Under RRS 87, the rule 11.11 of the International Dragon Class Rules does apply: a VHF radio may be on board, which shall only be used in case of an emergency. The race committee may communicate relevant information to sailors. The channel to be used will be channel 72. The Racing Rules signals will prevail.
- 1.6 If there is a conflict between languages the English text will take precedence.
- 1.7 Every person on board who has its domicile in the Netherlands shall have the required license.


#### 2. NOTICES TO COMPETITORS

Notices to competitors will be posted on the official notice board located in the hall of the clubhouse of the RNYC.

### 3 CHANGES TO SAILING INSTRUCTIONS

Any change to the sailing instructions will be posted before 09.00 on the day it will take effect, except that any change to the schedule of races will be posted by 20.00 on the day before it will take effect.

### 4. SIGNALS MADE ASHORE

- 4.1 Signals made ashore will be displayed from the flagpole at the marina, in front of the Pampusbar.
- 4.2 When flag AP  is displayed ashore, '1 minute' is replaced with 'not less than 60 minutes' in the race signal AP.

### 5 SCHEDULE OF RACES

#### 5.1 Dates of racing:

*Date*

Thursday September 12	11.55	warning signal race 1
	Asap	warning signal race 2
Friday September 13	10.55	warning signal race 3
	Asap	warning signal race 4
Saturday September 14	10.55	warning signal race 5
	Asap	warning signal race 6
Sunday September 15	10.55	warning signal race 7
	Asap	prize giving

- 5.2 (a) Seven Races are scheduled. No more than two races are scheduled per day.
- (b) One extra race per day may be sailed, provided that no race becomes ahead of schedule.
- 5.3 To alert boats that a race or sequence of races will begin soon, the orange starting line flag will be displayed with one sound for at least four minutes before a warning signal is displayed.
- 5.4 On the last scheduled day of racing no warning signal will be made after 15.00.

### 6 CLASS FLAGS

Class flag will be Code Flag "D"

### 7 RACING AREAS

Attachment A shows the location of racing areas.

## 8 THE COURSES

- 8.1 The diagram in Attachment B show the courses, including the approximate angles between legs, the order in which marks are to be passed, and the side on which each mark is to be left.
- 8.2 The approximate distance from the midpoint of the starting line to Mark 1 will be 0,8 – 1.4 Nm.
- Mark 2 will be laid at a distance of approximately 150 meters and at an angle of approximately 70 degrees to the wind from Mark 1.
- 8.3 No later than the warning signal, the race committee signal vessel will display the approximate compass bearing of the first leg.
- 8.4 The course will not be shortened before the second windward leg to Mark 1 has been completed. This changes RRS 32.1

## 9 MARKS

- 9.1 Marks 1, 3 and 3A will be inflated, cylindrical yellow buoys. Mark 2 will be an orange buoy.
- 9.2 The starting marks will be the Race Committee signal vessel at the starboard end, flying a RNYC flag, and a Dan buoy flying an orange flag at the port end (ODM). Mark ILM will be a Dan buoy flying a green flag.
- 9.3 The finishing marks will be the Race Committee finish vessel at the starboard end and a Dan buoy flying an blue flag at the port end.
- 9.4 A race committee vessel signaling a change of a leg of the course is a mark as provided in SI 12.2.

## 10 SPARE

## 11 THE START

- 11.1 Races will be started by using RRS 26 with the warning signal given 5 minutes before the starting signal.
- 11.2 The starting line will be between a staff or mast displaying an orange flag on the starting mark at the starboard- end and the port-end starting mark. Near the inner starboard-end of the starting line a limiting mark (ILM) will be laid, which shall be kept to starboard when starting.
- 11.3 A boat that does not start within 10 minutes after her starting signal will be scored Did Not Start without a hearing. This changes RRS A4 and A5.

## 12 CHANGE OF THE NEXT LEG OF THE COURSE

- 12.1 To change the next leg of the course, the race committee will move the original mark (or the finishing line) to a new position.
- 12.2 Except at a gate, boats shall pass between the race committee vessel signalling the change of the next leg and the nearby mark, leaving the mark to port and the race committee vessel to starboard. This changes RRS 28.1.

## 13 THE FINISH

The finishing line will be between a staff or mast displaying an blue flag on the finishing mark at the starboard end and the course side of the port-end finishing mark.

## 14 PENALTY SYSTEM

14.1 RRS 44.1 is changed so that the Two-Turns Penalty is replaced by the One-Turn Penalty.

## 15 TIME LIMITS AND TARGET TIMES

15.1 Time limits and target times are as follows:

Time Limit: 2.30 hrs

Mark 1 time limit: 0.45 hrs

Target time: 1.30 hrs

If no boat has passed Mark 1 within Mark 1 time limit the race will be abandoned. Failure to meet the target time will not be grounds for redress. This changes RRS 62.1(a).

15.2 Boats failing to finish within 30 minutes after the first boat sails the course and finishes will be scored Did Not Finish without a hearing. This changes RRS 35, A4 and A5.

## 16 PROTESTS AND REQUESTS FOR REDRESS

16.1 Protest forms are available at the race office located in the Clubhouse of the RNYC. Protests and requests for redress or reopening shall be delivered there within the protest time limit.

16.2 The protest time limit is 70 minutes after the last boat has finished the last race of the day or the race committee signals no more racing today, whichever is later.

16.3 Notices will be posted within 20 minutes after the protest time limit to inform competitors of hearings in which they are parties or named as witnesses. Hearings will be held in the jury room, located at the RNYC clubhouse, beginning as soon as possible.

16.4 Notices of protests by the race committee, protest committee or technical committee will be posted to inform boats under RRS 61.1(b).

16.5 On the last scheduled day of racing a request for redress based on a protest committee decision shall be delivered no later than 30 minutes after the decision was posted. This changes RRS 62.2.

16.6 A request for a decision in writing has to be delivered within one hour after the decision is given verbally. This changes RRS 65.2.

## 17 SCORING

17.1 Four races are required to be completed to constitute a series.

17.2 (a) When fewer than 5 races have been completed, a boat's series score will be the total of her race scores.

(b) When 5, 6 or 7 races have been completed, a boat's series score will be the total of her race scores excluding her worst score.

## **18 SAFETY REGULATIONS**

- 18.1** Each day, before the first start, each boat shall pass on the starboard side of the RC signal boat and have her sail number acknowledged by the RC.
- 18.2** A boat that retires from a race shall notify the race committee as soon as possible.
- 18.3** Boats not leaving the harbour for a day's race shall inform the regatta office prior to the start.

## **19 REPLACEMENT OF CREW OR EQUIPMENT**

- 19.1** Substitution of competitors will not be allowed without prior written approval of the race committee. Replacement of the responsible person is not allowed.

## **20 EQUIPMENT AND MEASUREMENT CHECKS**

On the water, a boat can be instructed by a member of the race committee or a measurer to proceed immediately to a designated area for inspection. Ashore, equipment may be inspected or measured at times specified in the class rules and/or the notice of race.

## **21 SPARE**

## **22 OFFICIAL BOATS**

Official boats will be marked with a white flag with "RC", "Rescue" or "Jury".

## **23 SUPPORT BOATS**

- 23.1** Team leaders, coaches and other support persons shall stay outside areas where boats are racing from the time of the preparatory signal until all boats have finished or retired or the race committee signals a postponement, general recall or abandonment.
- 23.2** Support boats shall be marked with the national flag of the country they present.

## **24 TRASH DISPOSAL**

Trash may be placed aboard support and official boats.

## **25 HAUL-OUT RESTRICTIONS**

Boats shall not be hauled out during the regatta except with and according to the terms of prior written permission of the race committee.

## **26 DIVING EQUIPMENT AND PLASTIC POOLS**

Underwater breathing apparatus and plastic pools or their equivalent shall not be used around boats between the preparatory signal of the first race and the end of the regatta.

## **27 RADIO COMMUNICATION**

Except in an emergency, a boat that is racing shall not make voice or data transmissions and shall not receive voice or data communication that is not available to all boats.

## **28 PRIZES**

Helmsman and crew of the winning boat of the championship acquire the title "Dutch Champion" and receive the accompanying medals of the RNWA.

The responsible person of the winning boat acquires the Blue Pennant of the RNWA. In addition the responsible person of the winning boat shall have the possession of the Silver Dragon Temporary Prize for one year.

Helmsman and crew of the boats that are places second and third acquire also medals of the RNWA.

The Theodoor Gillissen Trophée will be awarded to the first placed boat, without discard, on Saturday evening. The responsible person of the winning boat shall have the possession of this prize for one year.

## **29 DISCLAIMER OF LIABILITY**

Competitors participate in the regatta entirely at their own risk. See RRS 4,

Decision to Race. The organizing authority will not accept any liability for material damage or personal injury or death sustained in conjunction with or prior to, during, or after the regatta.

## **30 RIGHTS TO USE NAME AND LIKENESS**

By participating in this event, competitors automatically grant to the organizing authority and the event sponsors the right, in perpetuity, to make, use, and show, at their discretion, any photography, audio and video recordings, and other reproductions of them made at the venue or on the water from the time of their arrival at the venue, until their final departure, without compensation.

## 31 INSURANCE

Each participating boat shall be insured with valid third-party liability insurance with a minimum cover of Euro 1.500.000 per event or the equivalent.

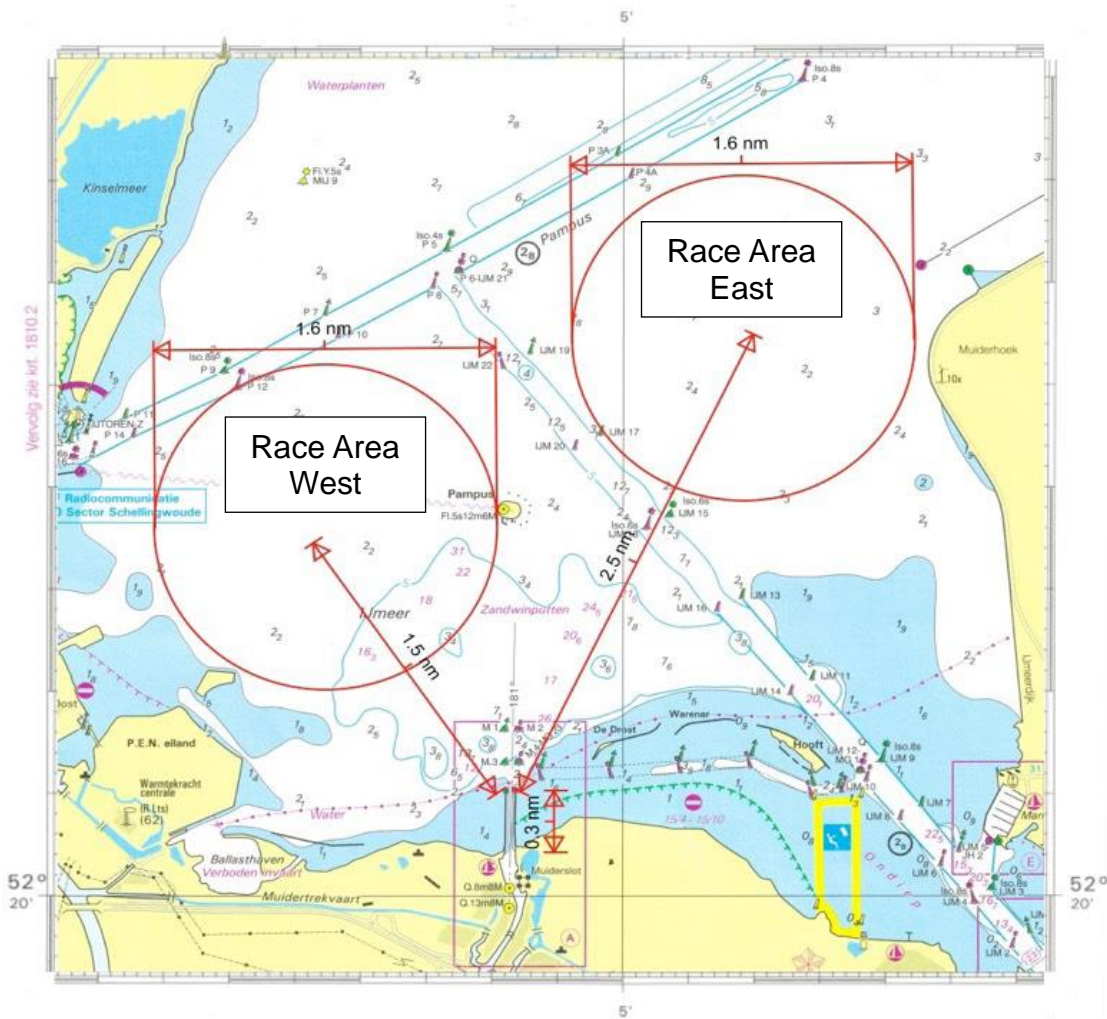
## 32 ORGANISATION

The race officers are: Jan Willem de Vlaming

The chairman of the protest committee is: Josje Hofland

# ATTACHMENT A

## Approximate RACING AREAS





**ATTACHMENT B**

ILLUSTRATING THE COURSE

A Windward – Leeward course

